

Metal mesh protection

As global leader for 35 years in the manufacturing of metal mesh gloves and aprons, Honeywell has mastered the integration of the manufacturing process. Indeed, Honeywell has developed its own production machines and created unique software dedicated to designing metal mesh products.

At Honeywell Safety Products we meet the growing expectation and demands from industry through continuous innovation and our experts use constant risk analysis to extend and complete the range with high-end solutions. As a result Honeywell is now in a position to provide solutions which respond to the users' needs, such as optimum comfort, ergonomics and fashion.

DETECTABLE RANGE 

Anxious to improve their own quality more and more businesses are eager to **detect the presence of foreign bodies** in their manufacturing process. As a consequence, Honeywell has developed a complete range of gloves, aprons and vests which are detectable from magnetic stainless steel.

The exceptional quality of Chainex metal mesh significantly reduces the number of repairs in comparison to what is generally found on the market.



CHAINEX	Colour code	EQUIVALENCE
6 XXL	6	11.5
5 XL	5	10.5
4 L	4	9.5
3 M	3	8.5
2 S	2	7.5
1 XS	1	6.5
0 XXS	0	5.5

IDENTIFY YOUR SIZE



EN 1082 Gloves and arm protection against cuts and hand knife nicks. They are tested at a power of 2.45 joules (falling from 0.25m from a blade attached to a mass of 1000g).



EN 13998 Aprons, trousers and protection vests against cuts and hand knife nicks. ChainexOne are tested at a power of 2.45 joules. Level 1: Falling from 0.25m from a blade attached to a mass of 1000g.



EN 13998 Aprons, trousers and protection vests against cuts and hand knife nicks. ChainexTwo, ChainexLite and Lamex are tested at a power of 4.9 joules.



Level 2: Falling from 0.5m from a blade attached to a mass of 1000g. Tests carried out by: LABORATOIRE NATIONAL D'ESSAIS (French National Test Laboratory)



Reversible GLOVE



AMBIDEXTROUS GLOVE



DETECTABLE

Metal mesh protection

ChaineXium



Stainless steel metal mesh glove with **shortened steel spring strap**. Titanium detectable version available on request.

SAFETY

- The spring strap on the wrist does not release: permanent user safety

COMFORT

- Auto adjustable: the glove adjusts to the hand without the need of a closing system

HYGIENE

- No removable or severable element: no foreign bodies in production.
- Easier washing, disinfection and drying: attachment system in steel mesh

EASE

- Identification sticker with zone which can be personalised and unique number per glove, etched onto the colour sticker



ChaineXium with or without cuff

Ref.	Weight	Name	Cuff length (mm)	Sizes
253300XR0302	160g	Chainexpert	0	0 to 6
253300XR0M02	160g	Detectable Chainexpert	0	
253300XR0T02	95g	Titanium Chainexpert	0	
253441XA0302	280g	ChaineXium with small cuff	100	
253431XA0302	330g	ChaineXium with large cuff	210	
253431XA0M02	330g	Detectable ChaineXium	210	

Sleeved ChaineXium (shoulder glove) with or without cuff

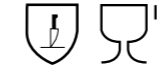
Ref.	Weight	Name	Sizes
253371XA0302	760g	Sleeved Chainexpert	0 to 6
253361XA0302	600g	Chainexpert sleeve without glove	

Detachable pieces	
Size	Left Right
●	
●	
○	2AGJCG000000 2AGJCD000000
●	
●	
●	2AGJCG001000 2AGJCD001000
●	



Metal mesh protection

Chainextra



Stainless steel metal mesh glove with **interchangeable plastic spring strap**. Detectable version available on request.

SAFETY

- No side opening: complete wrist protection

COMFORT

- Scalloped plastic spring: the control loop does not slide

HYGIENE

- Anti-bacterial agent: avoids contaminations

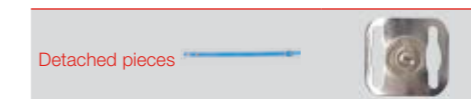
EASE

- Plastic spring strap removable and replaceable without tools



Chainextra

Ref.	Weight	Name	Cuff length (mm)	Sizes
254200XR0302	190g	Chainextra		0 to 6
254241XR0302	290g	Chainextra with small cuff	100	
254251XR1302	344g	Chainextra with medium cuff	165	
254231XR0302	385g	Chainextra with large cuff	210	
254231XM0302	385g	Chainextra with large detectable cuff	210	



Size

- 2AGSLX000A43
- 2AGSLX000A44
- 2AGSLX000A40
- 2AGSLX000A45
- 2AGSLX000A46
- 2AGSLX000A47
- 2AGSLX000A48

21062000S302

Sleeved Chainextra (shoulder glove)

Ref.	Weight	Sizes
254271XG0302	934g	Left
254271XD0302	934g	Right

Detachable pieces	
Size	Left Right
●	
●	
○	2AGJCG000000 2AGJCD000000
●	
●	
●	2AGJCG001000 2AGJCD001000
●	



N.B: the X in each references refers to the size which needs to be specified when ordering: from 0 to 6. See page 249

Metal mesh protection- gloves

Chainex 2000



Stainless steel metal mesh glove with **textile spring strap**.

SAFETY

- For versions with a plastic sleeve equipped with glass fibre, exceptional resistance to shock, cleaning and ultraviolet products.

COMFORT

- The extremely flexible spring strap adapts to all shapes and guarantees comfort and ergonomics.

Ref. Textile spring strap	Weight	Name	Size
2500000XR0302	170g	Chainex 2000	0 to 6



Chainex 2000 with or without reversible metal mesh cuff

Ref. Textile spring strap	Weight	Name	Cuff length (mm)	Sizes
2500000XR0302	170g	Chainex 2000	0	0 to 6
250041XR1302	249g	Chainex 2000 small cuff	100	
250051XR1302	307g	Chainex 2000 medium cuff	165	
250031XR1302	249g	Chainex 2000 large cuff	200	



Chainex 2000 with plastic cuff

Ref. Textile spring strap	Ref. Plastic spring strap	Weight	Name	Size
250021XG1302	254021XG1302	350g	Chainextra 2000 with removable cuff	Left
250021XD1302	254021XD1302	350g	Chainextra 2000 with removable cuff	Right
250011XG1302	254011XG1302	350g	Chainextra 2000 with fixed cuff	Left
250011XD1302	254011XD1302	350g	Chainextra 2000 with fixed cuff	Right



		Removable plastic cuff	
Size		Left	Right
● ●		2MPBP1AG1A39	2MPBP1AD1A39
○ ● ●	21062000S302	2MPBP1AG2A39	2MPBP1AD2A39
● ●		2MPBP1AG3A39	2MPBP1AD3A39



N.B: the X in each references refers to the size and needs to be specified when ordering: from 0 to 6. See page 249

Metal mesh protection- gloves

Special products

APPLICATIONS

- Thumb protection: cutting operations, flower cutting, stripping of cables.
- Three finger protection: principally used in the textiles industry.

Thumb protection

Ref. 2P0000XR0302



Fixed glove

Ref. 2AGFD000A46

(Also available in white sold in packs of 100)



Three fingered glove

Ref. 230000XR0302



Made to measure gloves



Metal mesh protection- aprons/vests

SAFETY

- Close mesh (levels 1 & 2): for better protection against tapered knives.

TECHNICAL CHARACTERISTIC

- External mesh diameter: 4mm.

ChainexOne



Protection level 1



ChainexTwo

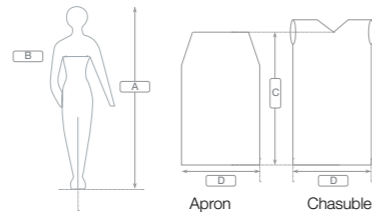


Protection level 2



HYGIENE

- 100% stainless steel design.
- Food and anti-bacterial quality plastic braces and belts.



ChainexOne apron (blue plastic braces in H formation)

Ref.	A max (cm)	B max (cm)	C max (cm)	D max (cm)	Weight (gr)	Brace kit
4CSL00E1B302	164	90	69	41	815	4ATJBC002A46
4CSL00G3B302	170	98	72	44	881	
4CSL00I5B302	180	108	76	49	1010	
4CSL00K7B302	194	120	82	54	1160	

ChainexOne vest

Ref.	A max (cm)	B max (cm)	C max (cm)	D max (cm)	Weight (gr)	Blue Adflex belt
4CSLC0G3B302	170	98	72	44	1285	4ATJC003A46
4CSLC0I5B302	180	108	76	49	1485	
4CSLC0K7B302	194	120	82	54	1852	

ChainexTwo apron (blue plastic braces in H formation)

Ref.	A max (cm)	B max (cm)	C max (cm)	D max (cm)	Weight (gr)	Brace kit
4CSROOI5B302	180	108	76	49	1358	4ATJBC002A46
4CSROOK7B302	194	120	82	54	1563	

ChainexTwo vest

Ref.	A max (cm)	B max (cm)	C max (cm)	D max (cm)	Weight (gr)	Blue Adflex belt
4CSRCOK7B302	194	120	82	54	2162	4ATJC003A46

Metal mesh protection- aprons

RECOMMENDATIONS

- Continuous protection from torso to wrist.
- The weight is largely borne on the shoulders due to the design of the shoulder and neckline, there is no strain on the nape of the neck.
- The metal mesh makes the apron very supple and easy to put on and wear and cleaning is made easier.

ChainexExtend one sleeve



Protection level 2

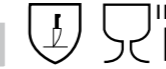
Ambidextrous material



ChainexExtend one sleeve

Ref.	Comments	Name	User size	Chest size	Net weight (gr)
4CXTC3G2B302	2	○ ChainexExtend 1 sleeve, titanium T2	152 - 164	82 - 90	1986
4CXTC3G3B302	3	● ChainexExtend 1 sleeve, titanium T3	164 - 170	90 - 98	2076
4CXTC3G4B302	4	● ChainexExtend 1 sleeve, titanium T4	170 - 180	98 - 108	2232
4CXTC3G5B302	5	● ChainexExtend 1 sleeve, titanium T5	180 - 194	108 - 120	2408
4CXTC3G6B302	6	● ChainexExtend 1 sleeve, titanium T6	194 - 207	120 - 130	2692
4CXTC3G7B302	7	● ChainexExtend 1 sleeve, titanium T7	207 - 220	130 - 140	2866

ChainexExtend two sleeves



Protection level 2

ChainexExtend two sleeves

Ref.	Comments	Name	User size	Chest size	Net weight (gr)
4CXTC4G2B302	2	○ ChainexExtend 2 sleeve, titanium T2	152 - 164	82 - 90	2286
4CXTC4G3B302	3	● ChainexExtend 2 sleeve, titanium T3	164 - 170	90 - 98	2450
4CXTC4G4B302	4	● ChainexExtend 2 sleeve, titanium T4	170 - 180	98 - 108	2550
4CXTC4G5B302	5	● ChainexExtend 2 sleeve, titanium T5	180 - 194	108 - 120	2790
4CXTC4G6B302	6	● ChainexExtend 2 sleeve, titanium T6	194 - 207	120 - 130	3220
4CXTC4G7B302	7	● ChainexExtend 2 sleeve, titanium T7	207 - 220	130 - 140	3416

Accessories:

- Blue Adflex belt: 4ATJC003A46
- Blue plastic semi-brace kit (M/F compatible): 4AGCXT000A46

Accompanying glove:

- CHAINEXIUM small cuff 253441XA0302 – See page 250
- CHAINEXTRA small cuff 254241XR0302 – See page 250



Metal protection- aprons/vest

SAFETY

- Weight 25% less than what is generally found on the market.

TECHNICAL CHARACTERISTIC

- 7mm external mesh diameter.

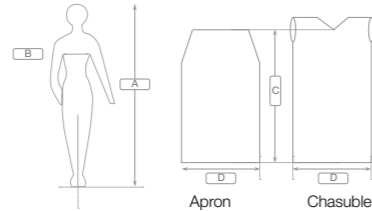
HYGIENE

- 100% stainless steel design.

ChainexLite



Protection level 2



ChainexLite apron (blue plastic braces in H formation)

Ref.	A max (cm)	B max (cm)	C max (cm)	D max (cm)	Weight (gr)	Brace kit
4C704500C302	166	100	70	45	825	4ATJBC002A46
4C755500C302	178	122	75	55	1058	
4C805500C302	190	122	80	55	1124	
4C905500C302	214	122	90	55	1237	
4C116000C302	261	133	110	60	1639	

ChainexLite apron (blue textile braces in H formation)

Ref.	A max (cm)	B max (cm)	C max (cm)	D max (cm)	Weight (gr)	Brace kit
4C704500N302	166	100	70	45	825	4ATJBCJ00A46
4C755500N302	178	122	75	55	1058	
4C805500N302	190	122	80	55	1124	4ATJBCF00A46
4C905500N302	214	122	90	55	1237	
4C116000N302	261	133	110	60	1639	

ChainexLite vest

Ref.	A max (cm)	B max (cm)	C max (cm)	D max (cm)	Weight (gr)	Blue Adflex belt
4C7555C0C302	178	122	75	55	1665	4ATJC003A46
4C9055C0C302	214	122	90	55	1800	

ChainexLite detectable version

Ref.	Name	A max (cm)	B max (cm)	C max (cm)	D max (cm)	Weight* (gr)	Accessories
4C605500NM02	Chainexlite detectable apron	142	122	60	55	1100	blue textile brace kit, in X formation
4C755500NM02	Chainexlite detectable apron	178	122	70	55	1322	
4C9055C0CM02	Chainexlite detectable chasuble	214	122	90	55	2400	Blue plastic belt

Metal protection- aprons/vest

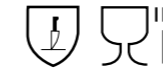
SAFETY

- 100% invisible.

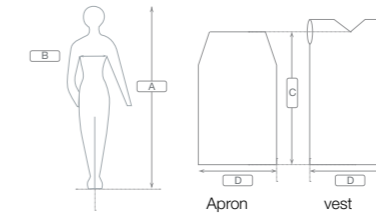
COMFORT

- The small size of aluminium plates significantly increases the fluidity of the apron giving an optimum feeling of comfort.

LamexPlus



Protection level 2



LamexPlus apron (blue plastic braces in H formation)

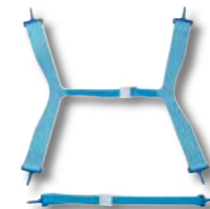
Ref.	A max (cm)	B max (cm)	C max (cm)	D max (cm)	Weight (gr)	Brace kit
4L704500CC01	166	100	70	45	1214	4ATJBC002A46
4L755500CC01	178	122	75	55	1480	
4L805500CC01	190	122	80	55	1632	
4L905500CC01	214	122	90	55	1750	
4L116000CC01	261	133	110	60	2215	4ATJBC004A46

LamexPlus vest

Ref.	A max (cm)	B max (cm)	C max (cm)	D max (cm)	Weight (gr)	Blue Adflex belt
4L7555C0CC01	178	122	75	55	1570	4ATJC003A46
4L9055C0CC01	214	122	90	55	1950	

Accessories - aprons/vest

For aprons



Plastic brace kit in H formation:
 4ATJBC002A46 - Size 70x45, 75x55, 80x55 and 90x55
 4ATJBC004A46 - Size 110x60

Blue textile brace kit in X formation:
 4ATJBCJ00A46 - Size 70x45 and 75x55
 4ATJBCF00A46 - Size 80x55 and 90x55
 4ATJBCI00A46 - Size 110x60

For vest



Blue plastic Adflex belt
 4ATJC003A46